

Enid Thelma WILSON – Ref 243/1/1



**Kindergarten
Principal,
Gardener and
Friend to many**

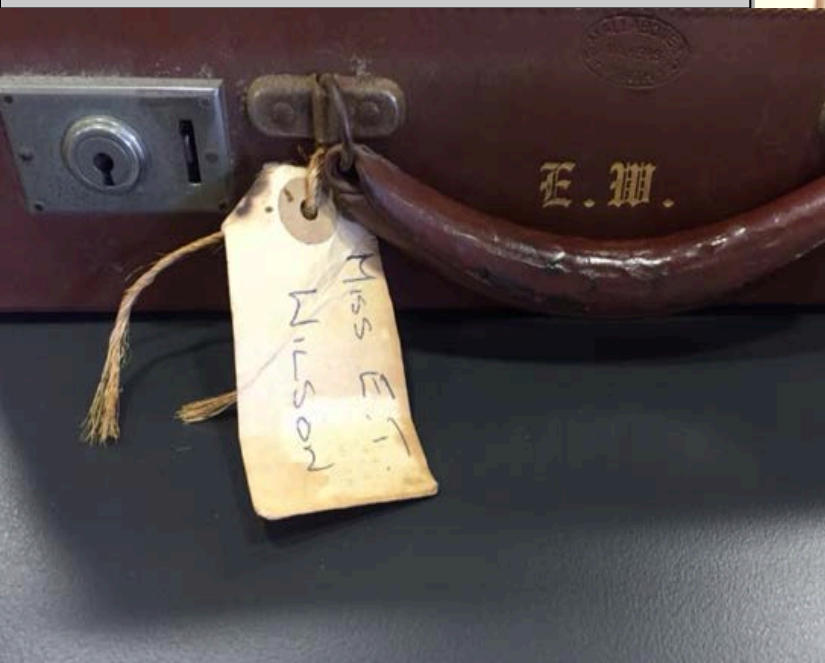


Enid Thelma WILSON
Kindergarten Principal
Ref 243/1/2,

- Copyright for the images and objects shown, unless otherwise indicated, are held by the Upper Hutt Library Heritage Collection
- Archive Reference 243, Wilson, Edith Thelma (1896-1994)

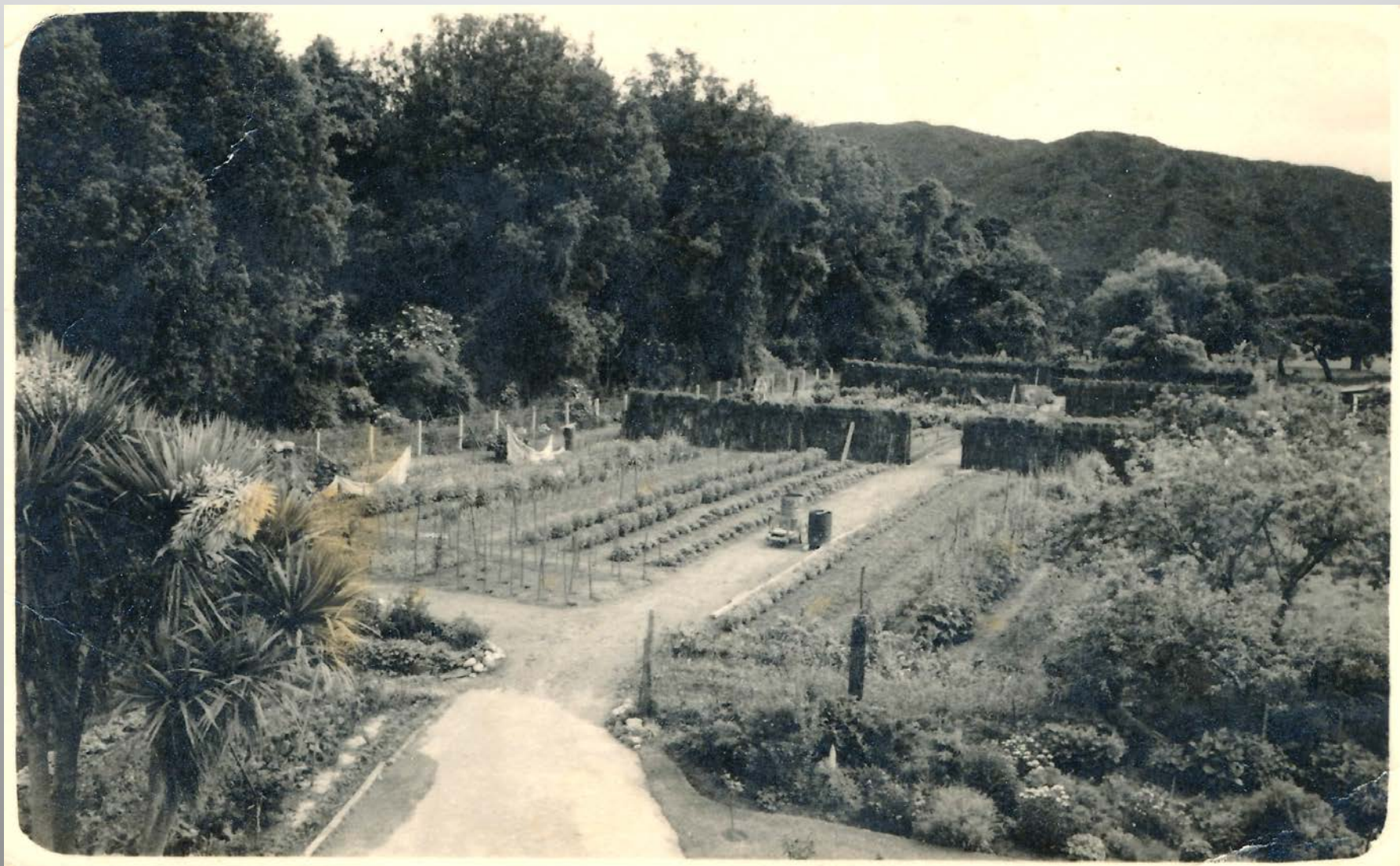
**Enid Wilson's case
Presented on her farewell
by the Western Free
Kindergarten Association –
1926**

Photograph – Kerry Bethell
Collection

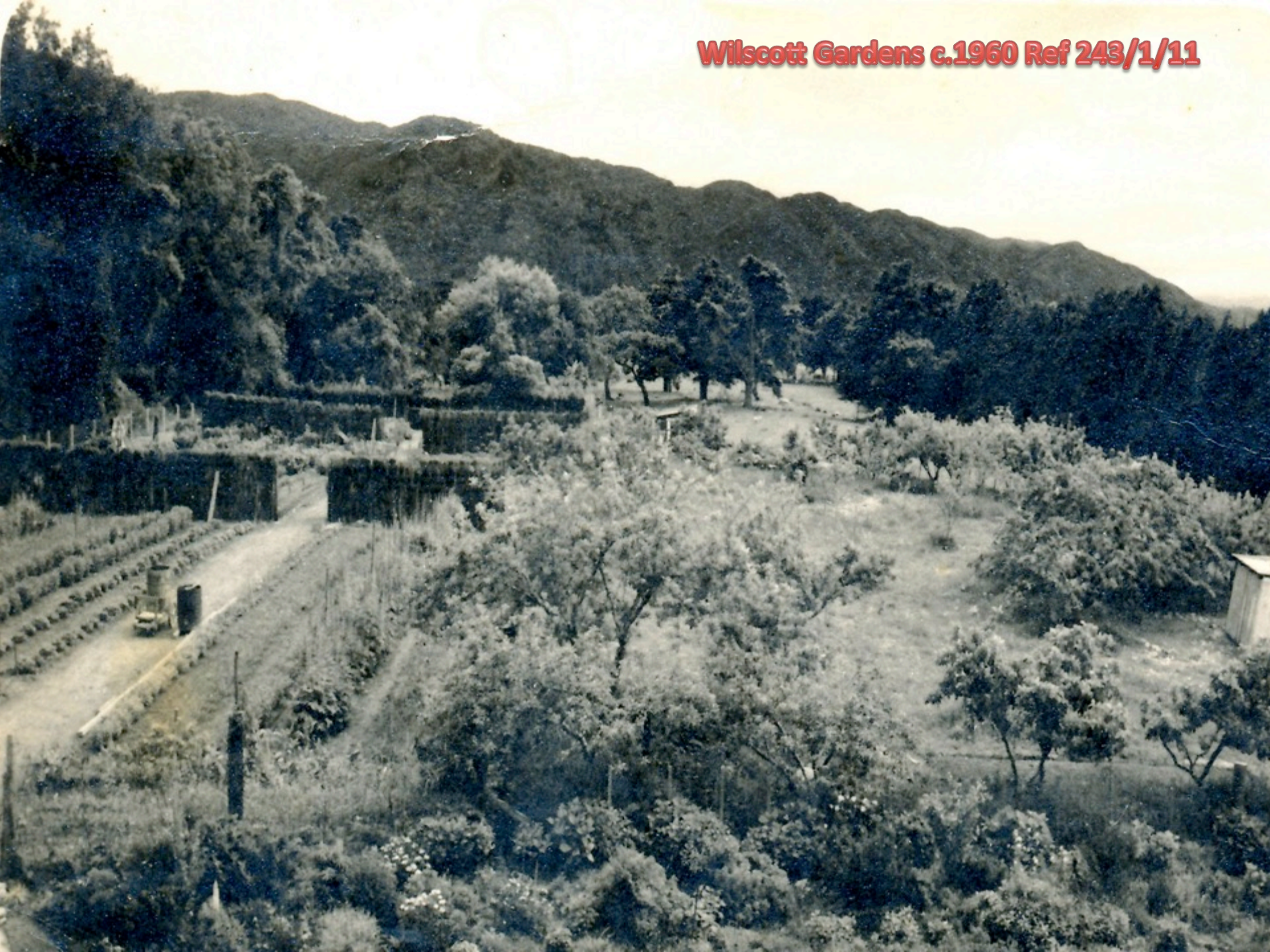


Wilscott Gardens Ref 243/1/10

1950, Enid Wilson and Edna (Ted) Scott develop Wilscott Market Gardens



Wilscott Gardens c.1960 Ref 243/1/11



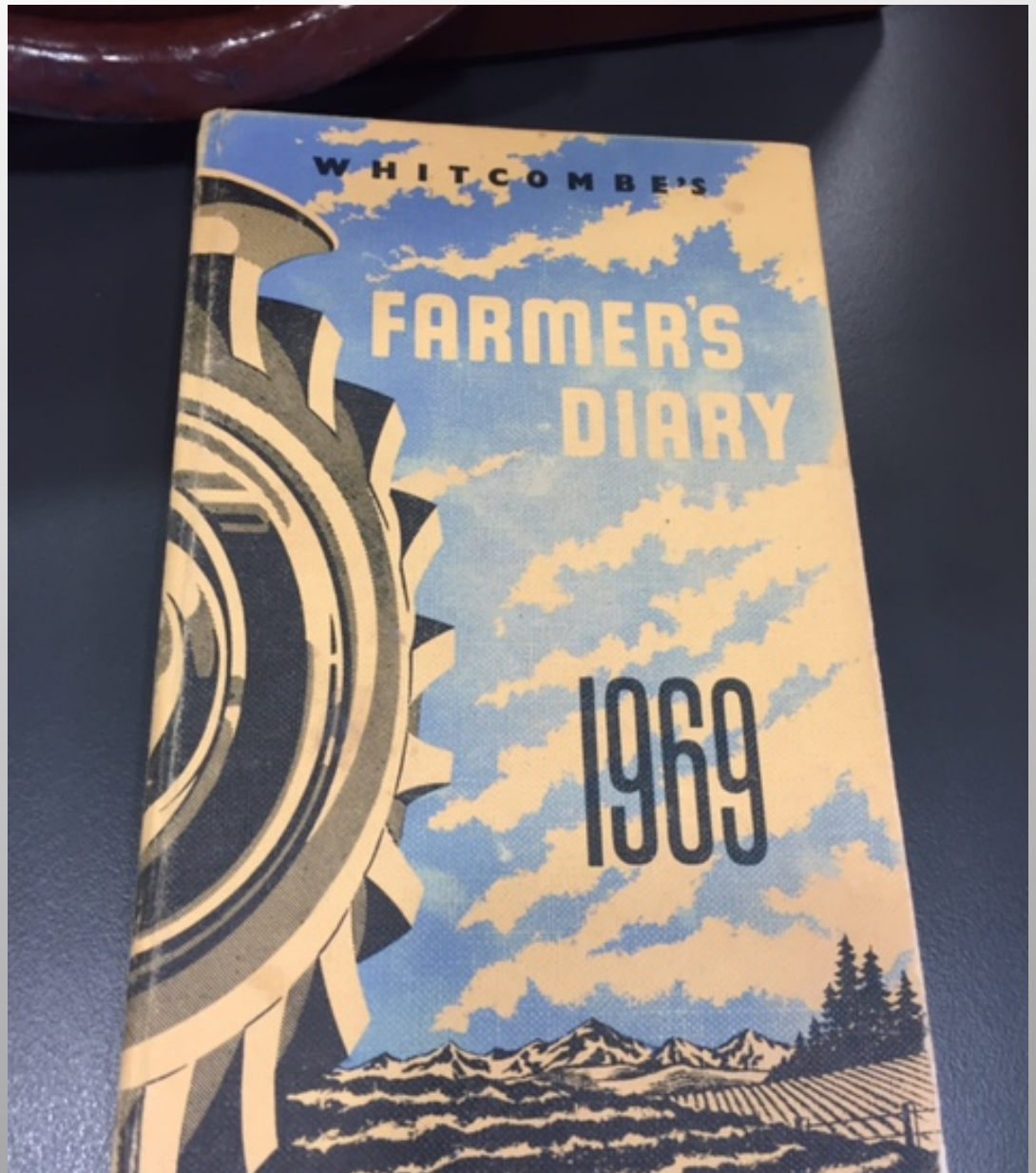
Enid Wilson Wilscott, 1950 243/1/9

FOR SALE
FRUIT, [REDACTED]
VEGETABLES.



**Enid Wilson's
Gardening diary
1969** ref 243/2/2

Photographs on this and
next slide from Kerry
Bethell Collection





Ted Scott & Enid Wilson - Sampling the produce
Ref 243/1/4

Ref 243/1/3





Moonshine

Week-end Cottage

Ref 243/1/8



Ref 243/1/7



Kindergarten Graduate Jubilee Reunion March 1956

Ref 243/2

Taken at Kindergarten
Graduates Jubilee Re-union
March, 1956.

Ted Scott.

Valerie Cheesman, Secretary
Ngairi Baker, President
Glad Nelson, Patron.

296

Ngairi Baker (Newell)
Valerie Cheeseman (Wootton)



WFKA Graduate Association Reunion 1956

Ref 243/2

Selling Wilscott Gardens

1969

'Nature
aided by
Human
Hands'

ref 243/2/1

NATURE aided by HUMAN HANDS
created

"WILSCOTT GARDENS"

A place of INFINITE BEAUTY and
CHARM

Now rooded and subdivided into nine superlative garden lots. The exotic Shrubs, Fruit Trees and Lawns have been retained unspoiled to present the finest home sites of their kind ever offered in the Wellington area for the garden-loving home owner.

In secluded setting, the beauty of which is enhanced by a 'back-drop' of native bush on the southern side ensuring absolute shelter from southerly winds and weather. Unobstructed sun from the north. This is perfection 'plus' for the garden lover.

Situate in absolute privacy and seclusion, just off the main street. One mile north of Upper Hutt Post Office. Areas: 21 to 30 perches. All flat and 'drive-on' and fully serviced underground.

Priced from \$3600 to \$5000
Terms if required

The lots are offered for sale by Private Treaty. As the offering is very limited (9 lots only) and there will not be any more, buyers are urged to make early application for inspection which is by appointment only with the—

SOLE SELLING AGENT



251 Cuba Street, Wellington. Tels. 57-948, 57-949 and
after hours 558-456.

For the convenience of buyers a Mobile Office will be on
the site on a Saturday, May 10th, from 10.30 a.m. until
2.30 p.m.

May 1969.

Ferguson Drive
(opposite 'Mobil')